



GOOD-ARK

# U05GU4B48

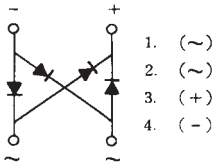
## SILICON DIFFUSED JUNCTION TYPE RECTIFIER STACK

Reverse Voltage - 400 Volts  
Forward Current - 0.5 Ampere

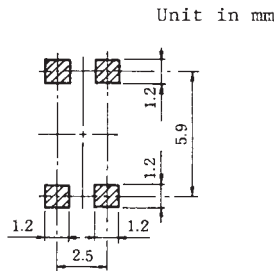
### Application: TELCOMMUNICATION APPLICATIONS

- Repetitive peak reverse voltage:  $V_{RRM}=400\text{Volts}$
- Average forward current:  $I_o=0.5\text{A}$  ( $T_A=47^\circ\text{C}$ )
- Glass passivated cavity-free junction
- Dual in line type
- Plastic mold package
- Low loss type

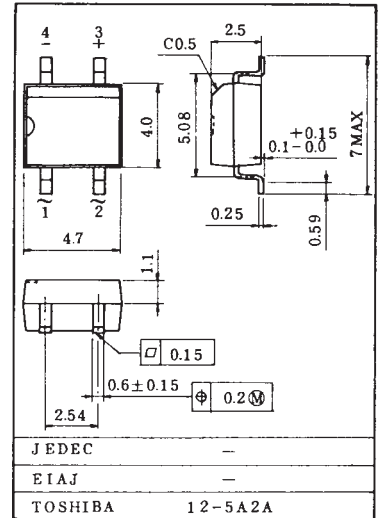
#### POLARITY



#### Standard Soldering Pad



Unit in mm



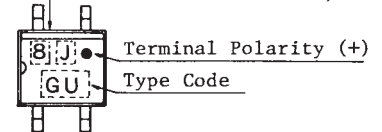
Weight : 0.13g

### Maximum Ratings ( $T_A=25^\circ\text{C}$ )

Characteristics	Symbols	Ratings	Units
Repetitive peak reverse voltage	$V_{RRM}$	400	Volts
Average output rectified current	$I_o$	0.5 0.8 *	Amp
Peak one cycle surge forward current (Non Repetitive)	$I_{FSM}$	30 (50Hz) 33 (60Hz)	Amps
Junction temperature	$T_J$	-40 to 150	$^\circ\text{C}$
Storage temperature range	$T_{stg}$	-40 to 150	$^\circ\text{C}$

Lot No.

Month (Starting from Alphabet A)  
Year (Last Number of the Christian Era)



Color:  
Silver

Symbol	DeviceType
GU	U05GU4B48

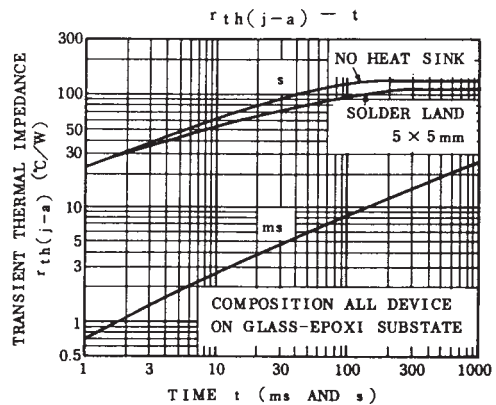
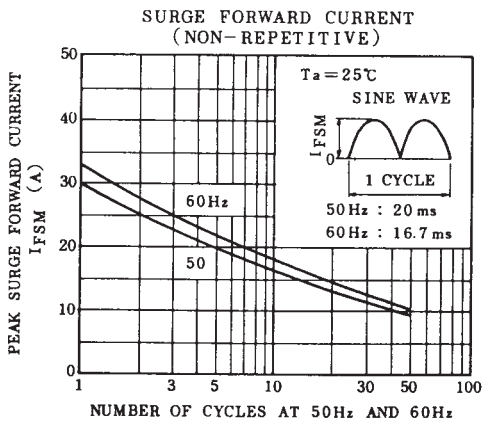
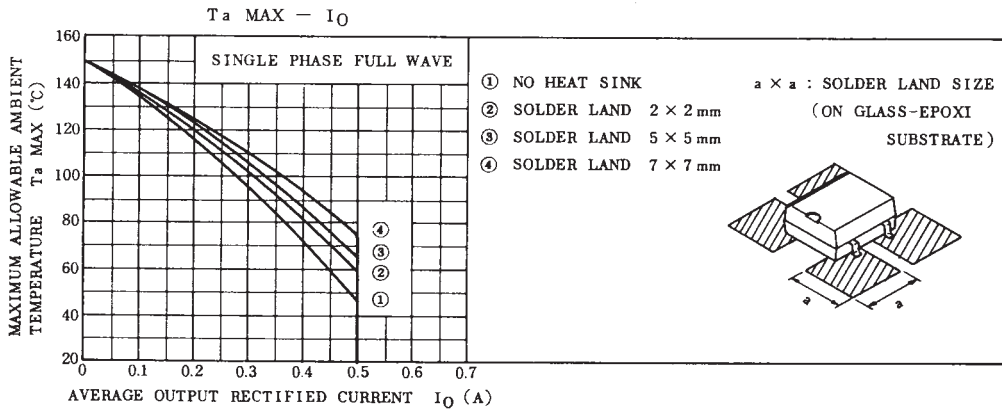
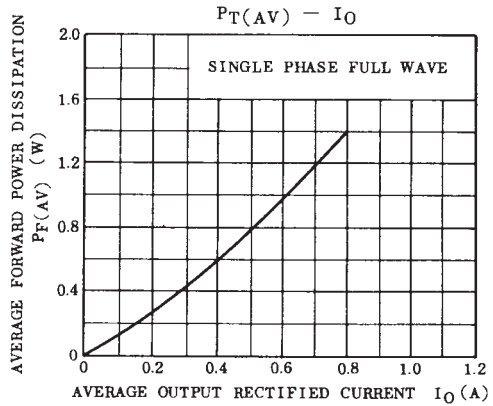
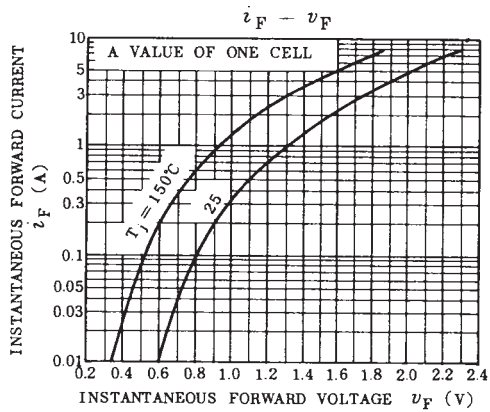
### Electrical Characteristics ( $T_A=25^\circ\text{C}$ )

Characteristics	Symbols	Test Conditions	Min.	Typ.	Max.	Units
Peak forward voltage (Note)	$V_{FM}$	$I_{FM}=20\text{mA}$	-	-	0.65	Volt
Repetitive peak reverse current (Note)	$I_{RRM}$	$V_{RRM}=\text{Rated}$	-	-	100	$\mu\text{A}$
Thermal resistance	$R_{th(J-A)}$	Junction to Ambient	-	-	130 75 *	$^\circ\text{C/W}$

Note: A value of on cell.

\* On alumina substrate

# U05GU4B48



# U05GU4B48

