

**FEATURES**

- Glass Passivated Die Construction
- Super-Fast Recovery Time For High Efficiency
- Low Forward Voltage Drop and High Current Capability
- Ideally Suited for Automated Assembly
- Plastic Material: UL Flammability Classification Rating 94V-0



DO-214AA (SMB)

**MECHANICAL DATA**

- Case: DO-214AA Molded plastic
- Terminals: Pure tin plated, lead free
- Polarity: Indicated by cathode band
- Weight: 93 mg (approx.)



Cathode

**MAXIMUM RATINGS AND ELECTRICAL CHARACTERISTICS**

Ratings at 25 °C ambient temperature unless otherwise specified. Single phase, half wave, 60 Hz, resistive or inductive load. For capacitive load, derate current by 20%.

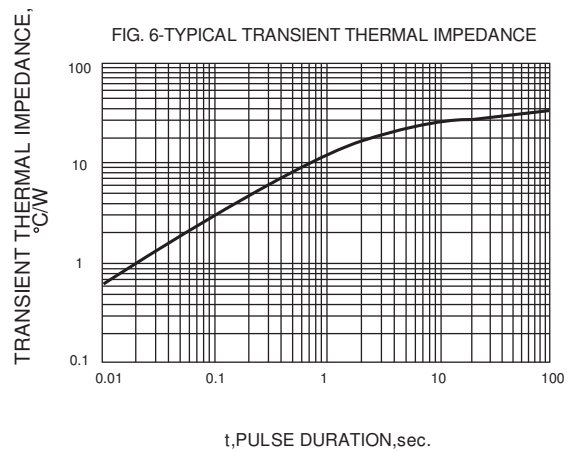
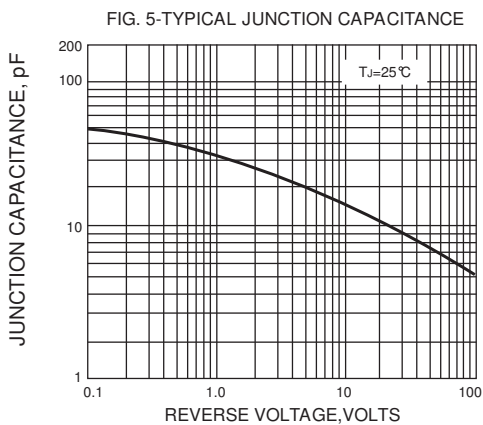
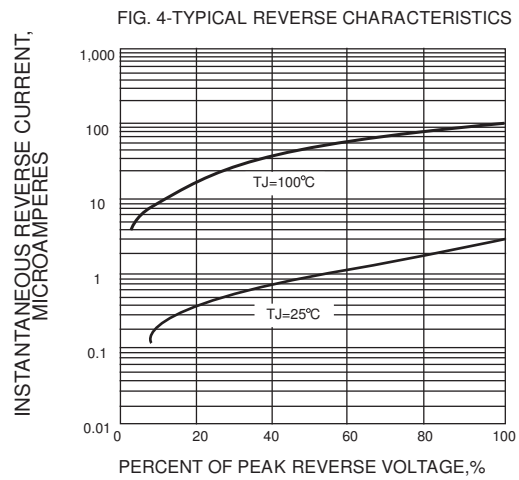
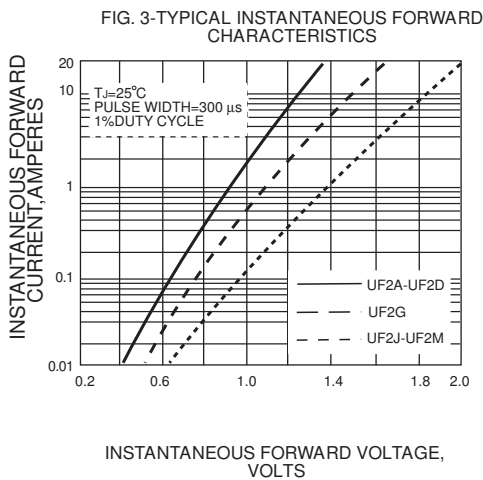
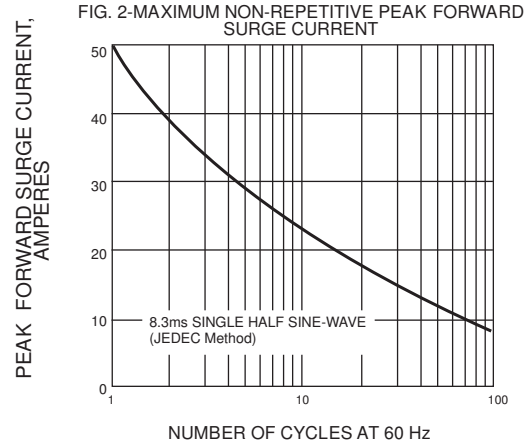
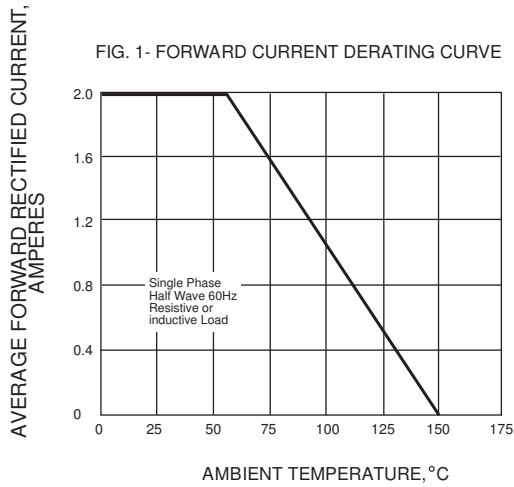
Parameter	Symbol	UF2A	UF2B	UF2D	UF2G	UF2J	UF2K	UF2M	Unit
Maximum Repetitive Peak Reverse Voltage	$V_{RRM}$	50	100	200	400	600	800	1000	V
Maximum RMS Voltage	$V_{RMS}$	35	70	140	280	420	560	700	V
Maximum DC Blocking Voltage	$V_{DC}$	50	100	200	400	600	800	1000	V
Maximum Average Forward Rectified Current at $T_A = 75\text{ }^\circ\text{C}$	$I_{F(AV)}$	2.0							A
Peak Forward Surge Current 8.3ms Single Half Sine-wave Superimposed on Rated Load (JEDEC)	$I_{FSM}$	50.0							A
Maximum Instantaneous Forward Voltage at 2 A	$V_F$	1.0		1.4		1.7		V	
Maximum DC Reverse Current at Rated DC Blocking Voltage	$I_R$	$T_A = 25\text{ }^\circ\text{C}$							$\mu\text{A}$
		$T_A = 100\text{ }^\circ\text{C}$							
Maximum reverse recovery time (NOTE1)	$t_{rr}$	50				75			nS
Typical Junction Capacitance (NOTE2)	$C_J$	28.0							pF
Maximum Thermal Resistance (NOTE3)	$R_{\theta JL}$	20.0							$^\circ\text{C/W}$
Operating and Storage Temperature Range	$T_{J, TS}$	-50 to + 150							$^\circ\text{C}$

Note: 1.Reverse recovery condition  $I_F=0.5\text{A}, I_R=1.0\text{A}, I_{rr}=0.25\text{A}$

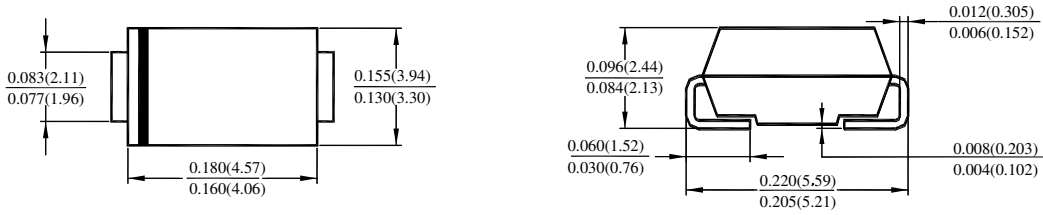
2.Measured at 1MHz and applied reverse voltage of 4.0V D.C.

3.P.C.B. mounted with 0.2x0.2"(5.0x5.0mm) copper pad areas

**Typical Characteristics**

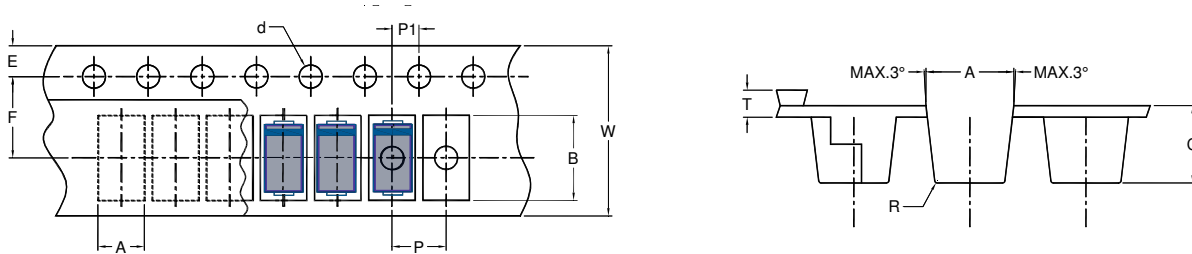


**SMB Package Outline Dimensions**



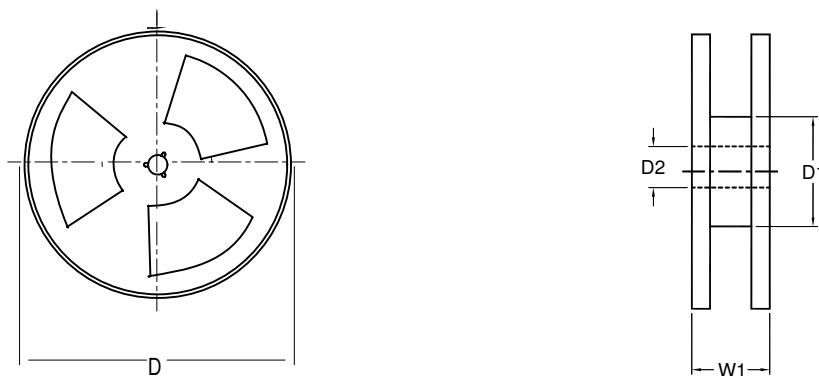
(DIMENSIONS ARE IN MILLIMETER )

**SMB Embossed Carrier Tape**



DIMENSIONS ARE IN MILLIMETER											
TYPE	A	B	C	d	E	F	P	P0	P1	T	W
SMB	3.65	5.69	2.67	1.5	1.5	5.65	8	4	2	0.6 Max	12
TOLERANCE	±0.1	±0.1	±0.1	±0.1	±0.1	±0.05	±0.1	±0.1	±0.1	±0.2	±0.2

**SMB Reel**



DIMENSIONS ARE IN MILLIMETER				
REEL OPTION	D	D1	D2	W1
7" DIA	178	50 min	13	16.8
TOLERANCE	±2	±0.1	±0.5	±2