

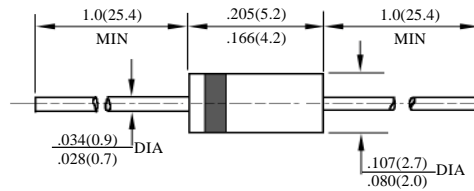
UF4001-UF4007

超快速二极管
SUPER FAST DIODES

型号 TYPE	最大反向 峰值电压 Maximum Peak Reverse Voltage	最大平均 正向电流 Maximum Average Rectified Current @ Half-Wave Resistive Load 60Hz		最大正向 浪涌电流 Maximum Forward Peak Surge Current @ 8.3ms Superimposed	最大反向 漏电流 Maximum Reverse Current @ PRV @ T _A =25°C	最大正向电压 Maximum Forward Voltage @ T _A =25°C		最大反向 恢复时间 Maximum Reverse Recovery Time	外型尺寸 Package Dimensions
	PRV	I _O @ T _L		I _{FM} (Surge)	I _R	I _{FM}	V _{FM}	T _{rr}	
	V _{FK}	A _{AV}	°C	A _{PK}	μA _{dc}	A _{PK}	V _{PK}	nS	
UF4001	50	1.0	55	30	5.0	1.0	1.00	50	DO - 41
UF4002	100						1.00	50	
UF4003	200						1.00	50	
UF4004	400						1.00	50	
UF4005	600						1.70	75	
UF4006	800						1.70	75	
UF4007	1000						1.70	75	

T_{rr} 测试条件: I_F=0.5A, I_R=1.0A, I_{RR}=0.25A

T_{rr} Test Conditions: I_F=0.5A, I_R=1.0A, I_{RR}=0.25A



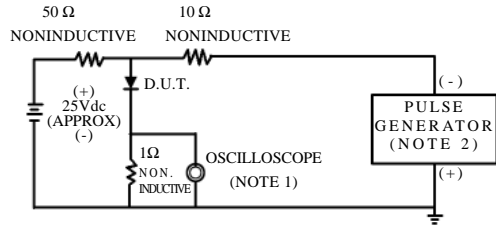
DO - 41

UF4001 – UF4007

超快速二极管额定值与特性曲线

RATING AND CHARACTERISTIC CURVES OF SUPER FAST DIODES

FIG.1-TEST CIRCUIT DIAGRAM AND REVERSE RECOVERY TIME CHARACTERISTIC



NOTES:1.Rise Time=7ns max.
Input Impedance=1megohm.22pF.
2.Rise Time=10ns max.
Source Impedance=50 ohms.

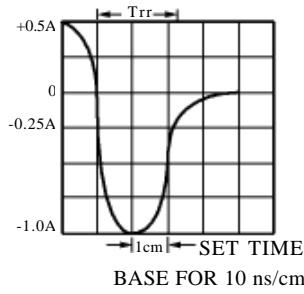


FIG. 2 – TYPICAL FORWARD CURRENT DERATING CURVE

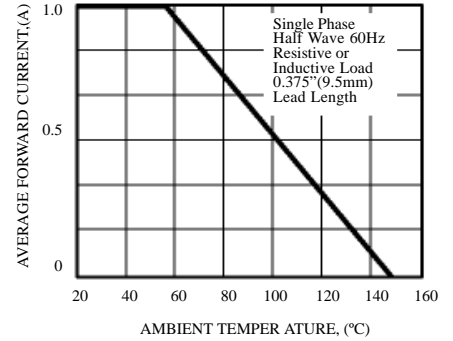


FIG. 3 – TYPICAL REVERSE CHARACTERISTICS

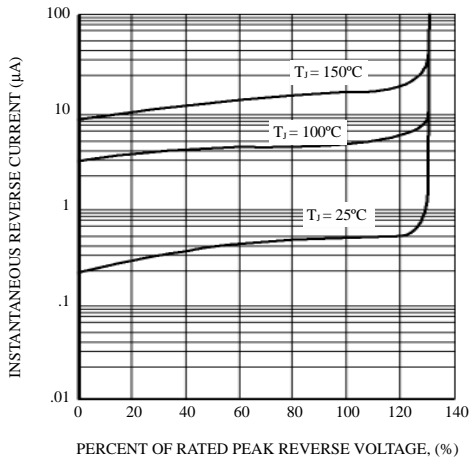


FIG. 4 – TYPICAL INSTANTANEOUS FORWARD CHARACTERISTICS

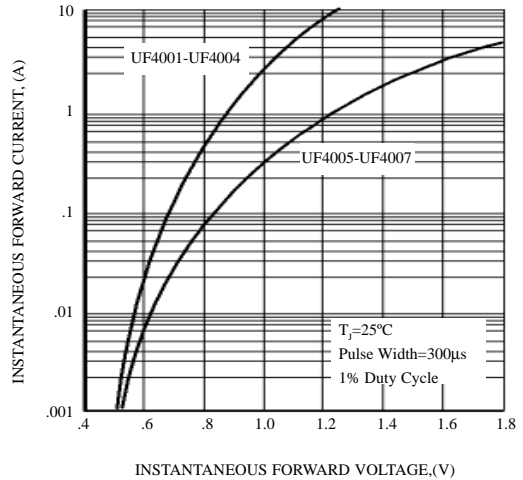


FIG. 5 – MAXIMUM NON-REPETITIVE FOWARD SURGE CURRENT

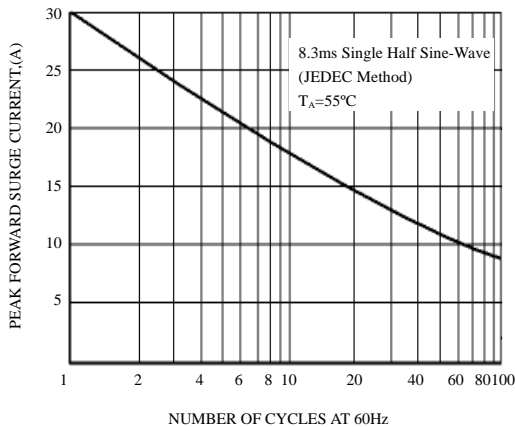


FIG. 6 – TYPICAL JUNCTION CAPACITANCE

