

Coaxial

Power Splitter/Combiner

ZAPD-23+

2 Way-0° 50Ω 700 to 2000 MHz

Maximum Ratings

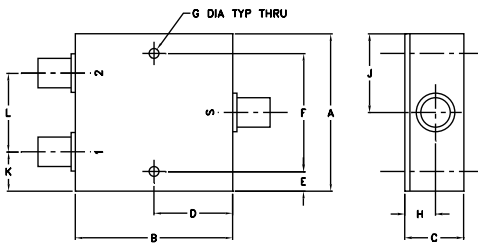
Operating Temperature	-55°C to 100°C
Storage Temperature	-55°C to 100°C
Power Input (as a splitter)	10W max.
Internal Dissipation	0.5W max.

Permanent damage may occur if any of these limits are exceeded.

Coaxial Connections

SUM PORT	S
PORT 1	1
PORT 2	2

Outline Drawing



Outline Dimensions (inch/mm)

A	B	C	D	E	F	G
2.00	1.75	0.75	0.875	0.13	1.750	0.125
50.80	44.45	19.05	22.23	3.30	44.45	3.18
H	J	K	L			wt
0.38	1.00	0.50	1.00			grams
9.65	25.40	12.70	25.40			65.0

Features

- wideband, 700 to 2000 MHz
- low insertion loss, 0.4 dB typ.
- good isolation, 27 dB typ.
- up to 10W power input as splitter
- excellent amplitude unbalance, 0.1 dB typ.
- excellent phase unbalance, 0.5 deg. typ.
- excellent VSWR, 1.15:1 typ.
- rugged shielded case

Applications

- UHF
- cellular
- GPS
- PCS/DCS

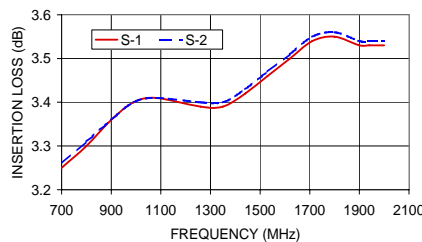
Electrical Specifications

FREQ. RANGE (MHz)	ISOLATION (dB)		INSERTION LOSS (dB) ABOVE 3.0 dB		PHASE UNBALANCE (Degrees)	AMPLITUDE UNBALANCE (dB)	VSWR (:1)	
	Typ.	Min.	Typ.	Max.			S Typ.	OUT Typ.
f _L -f _U					Max.	Max.		
700-2000	27	20	0.4	0.8	2	0.2	1.15	1.15

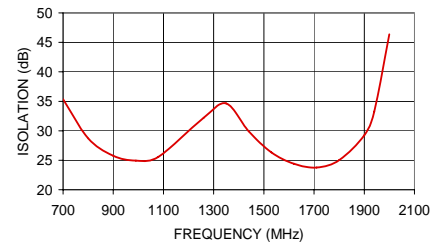
Typical Performance Data

Frequency (MHz)	Insertion Loss (dB)		Amplitude Unbalance (dB)	Isolation (dB)	Phase Unbalance (deg.)	VSWR S	VSWR 1	VSWR 2
	S-1	S-2						
700.00	3.25	3.26	0.01	35.36	0.22	1.03	1.07	1.07
800.00	3.30	3.31	0.01	28.70	0.25	1.15	1.17	1.16
900.00	3.36	3.36	0.01	25.77	0.32	1.25	1.24	1.23
990.00	3.40	3.40	0.01	24.94	0.37	1.31	1.26	1.25
1080.00	3.41	3.41	0.01	25.59	0.40	1.30	1.24	1.23
1260.00	3.39	3.40	0.01	32.22	0.47	1.15	1.10	1.10
1350.00	3.39	3.40	0.01	34.63	0.51	1.05	1.02	1.02
1440.00	3.42	3.43	0.01	29.90	0.54	1.05	1.07	1.07
1530.00	3.46	3.47	0.01	26.32	0.60	1.16	1.16	1.15
1620.00	3.50	3.51	0.01	24.42	0.62	1.25	1.22	1.21
1710.00	3.54	3.55	0.01	23.78	0.67	1.30	1.25	1.24
1800.00	3.55	3.56	0.01	25.03	0.71	1.29	1.24	1.23
1900.00	3.53	3.54	0.01	29.24	0.77	1.21	1.18	1.17
1940.00	3.53	3.54	0.01	33.27	0.79	1.16	1.15	1.14
2000.00	3.53	3.54	0.01	46.37	0.82	1.07	1.10	1.09

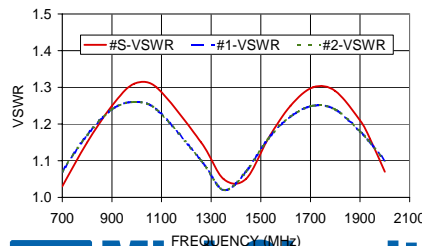
ZAPD-23+ INSERTION LOSS



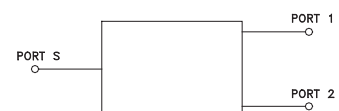
ZAPD-23+ ISOLATION



ZAPD-23+ VSWR



electrical schematic



Mini-Circuits®
ISO 9001 ISO 14001 AS 9100 CERTIFIED

minicircuits.com

P.O. Box 350166, Brooklyn, New York 11235-0003 (718) 934-4500 Fax (718) 332-4661 For detailed performance specs & shopping online see Mini-Circuits web site



The Design Engineers Search Engine Provides ACTUAL Data Instantly From MINI-CIRCUITS At: www.minicircuits.com

IF/RF MICROWAVE COMPONENTS

REV. OR
M109184
ZAPD-23+
HY/RS/CP
070105