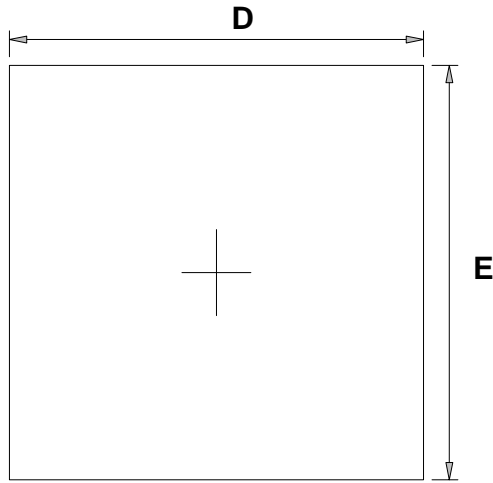
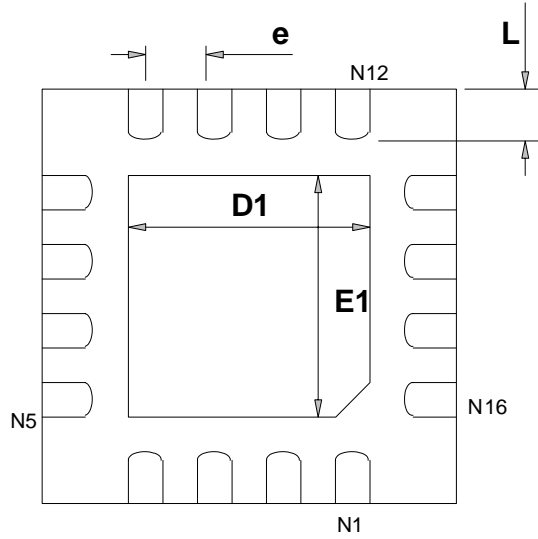




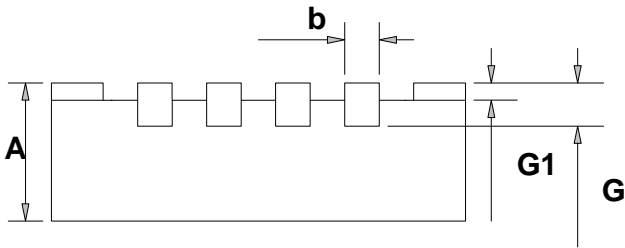
QFN-16B (4x4x0.75mm)



TOP VIEW



BOTTOM VIEW



REAR VIEW

| SYMBOLS | MILLIMETERS | | INCHES | |
|---------|-------------|-------|--------|-------|
| | MIN | MAX | MIN | MAX |
| A | 0.700 | 0.800 | 0.028 | 0.031 |
| D | 3.900 | 4.100 | 0.154 | 0.161 |
| E | 3.900 | 4.100 | 0.154 | 0.161 |
| D1 | 2.000 | 2.200 | 0.079 | 0.087 |
| E1 | 2.000 | 2.200 | 0.079 | 0.087 |
| G | 0.153 | 0.253 | 0.006 | 0.010 |
| G1 | 0.000 | 0.050 | 0.000 | 0.002 |
| L | 0.450 | 0.650 | 0.018 | 0.026 |
| b | 0.250 | 0.350 | 0.010 | 0.014 |
| e | 0.600 | 0.700 | 0.024 | 0.028 |